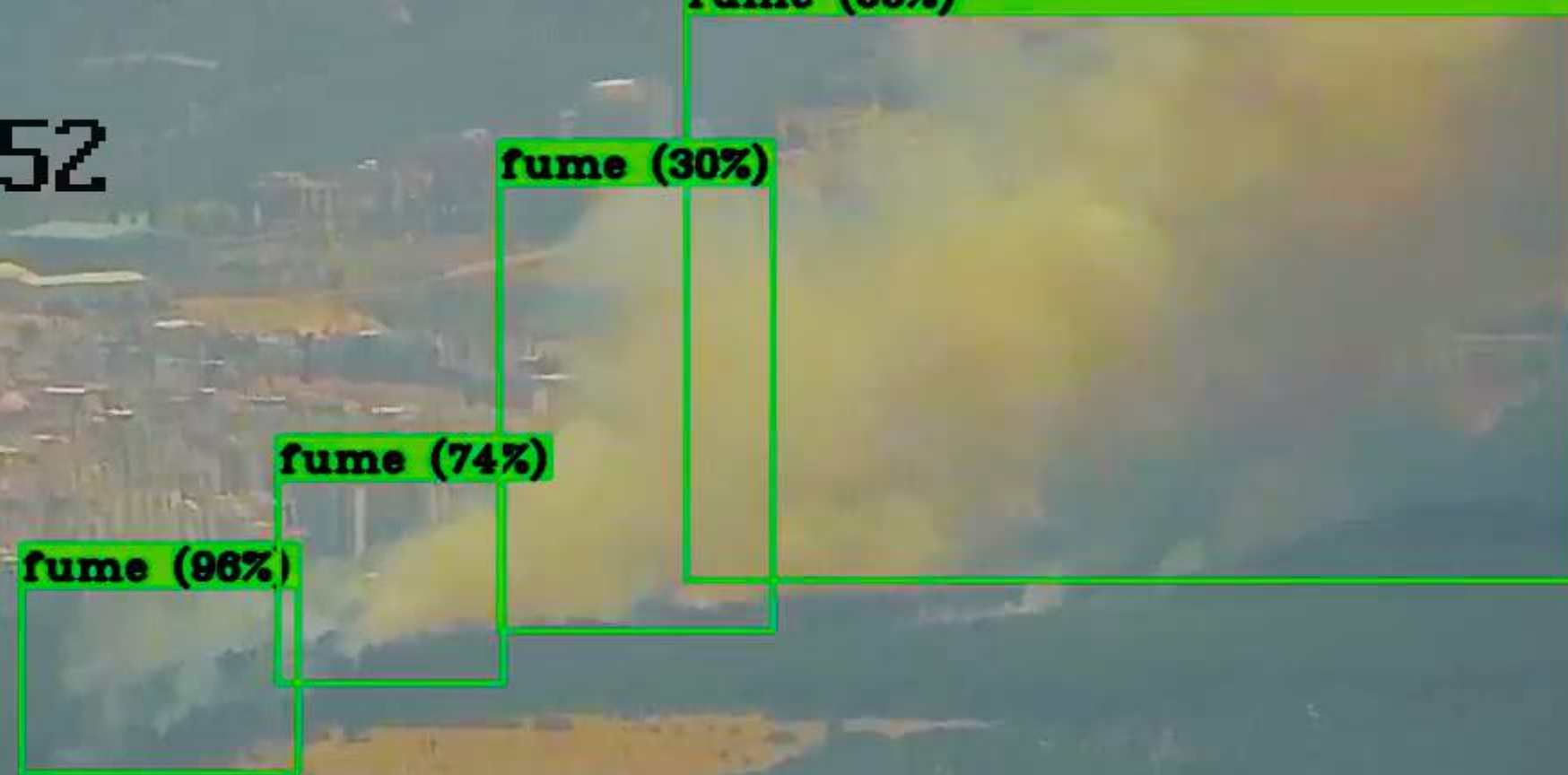




**contento**

**Forest Monitoring and Protection  
Integrated Intervention System**

06-28-2019 Fri 12:57:52



**A system that enhances the accuracy and efficiency of forest fire and crime detection by fusing traditional image processing techniques with deep learning.**

Camera 01

# Predict Before It Happens!

**A revolutionary system detecting forest fires in advance.**

**A multi-purpose shield identifying all types of forest crimes.**

**A solution enabling swift response through real-time data analysis.**

**A technology capable of seamless integration with all existing systems.**

**An effective solution protecting forests worldwide.**



# Prevent Forest Crimes

**Real-time Crime Tracking:** Empowering with dynamic monitoring.

**Instant Culprit Capture:** Enabling proactive intervention.

**Fast-tracked Justice:** Ensuring swift legal proceedings with solid evidence.

**Optimized Law Enforcement:** Streamlining search, seizure, and punishment.

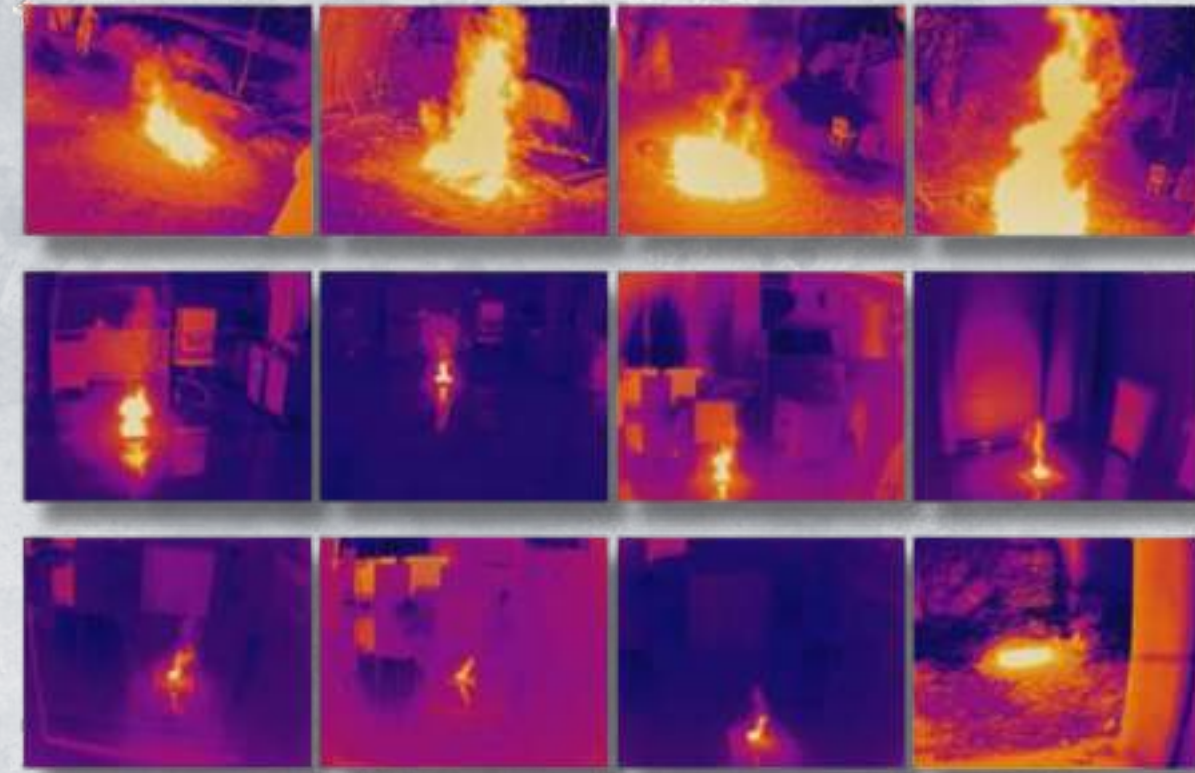
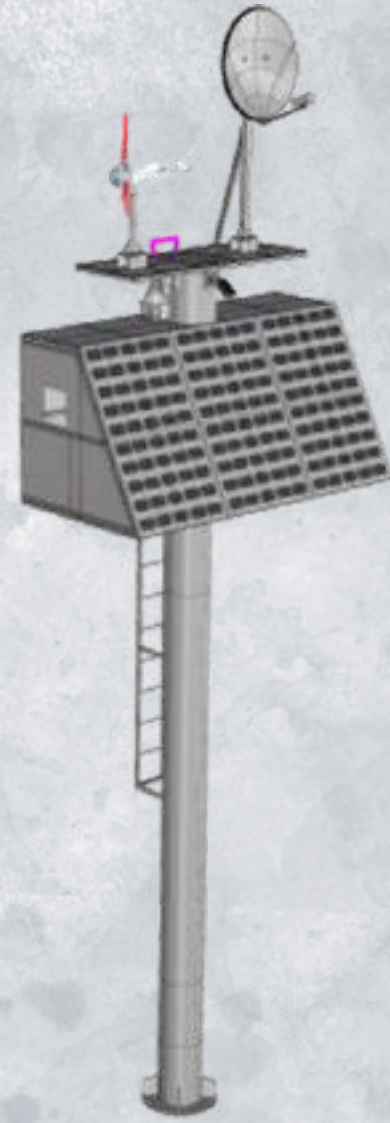
**Easy Crime Reporting:** Simplifying reports and evidence provision.

**Maximized Efficiency:** Harnessing time and resource savings.

**Forest Protection:** Safeguarding our vital green assets.



# Early Warning System



**Early Fire Detection:** Utilizes thermal cameras to detect forest fires in their initial stages.

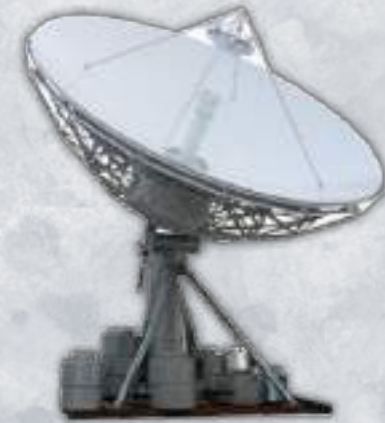
**Large Scale Monitoring:** Covers vast forested areas, identifying heat signatures that hint at possible fire outbreaks.

**Instant Alerts:** Notifies authorities promptly upon fire detection to ensure swift response and containment.

**Damage Minimization:** Plays a pivotal role in limiting harm to forests, wildlife, and human lives.

**Enhanced Fire Management:** Contributes significantly to improving fire management and response efforts.

# Early Warning System



**Tech-Enabled Traps:** Uses SIM card-enabled camera traps and satellite-assisted poles.

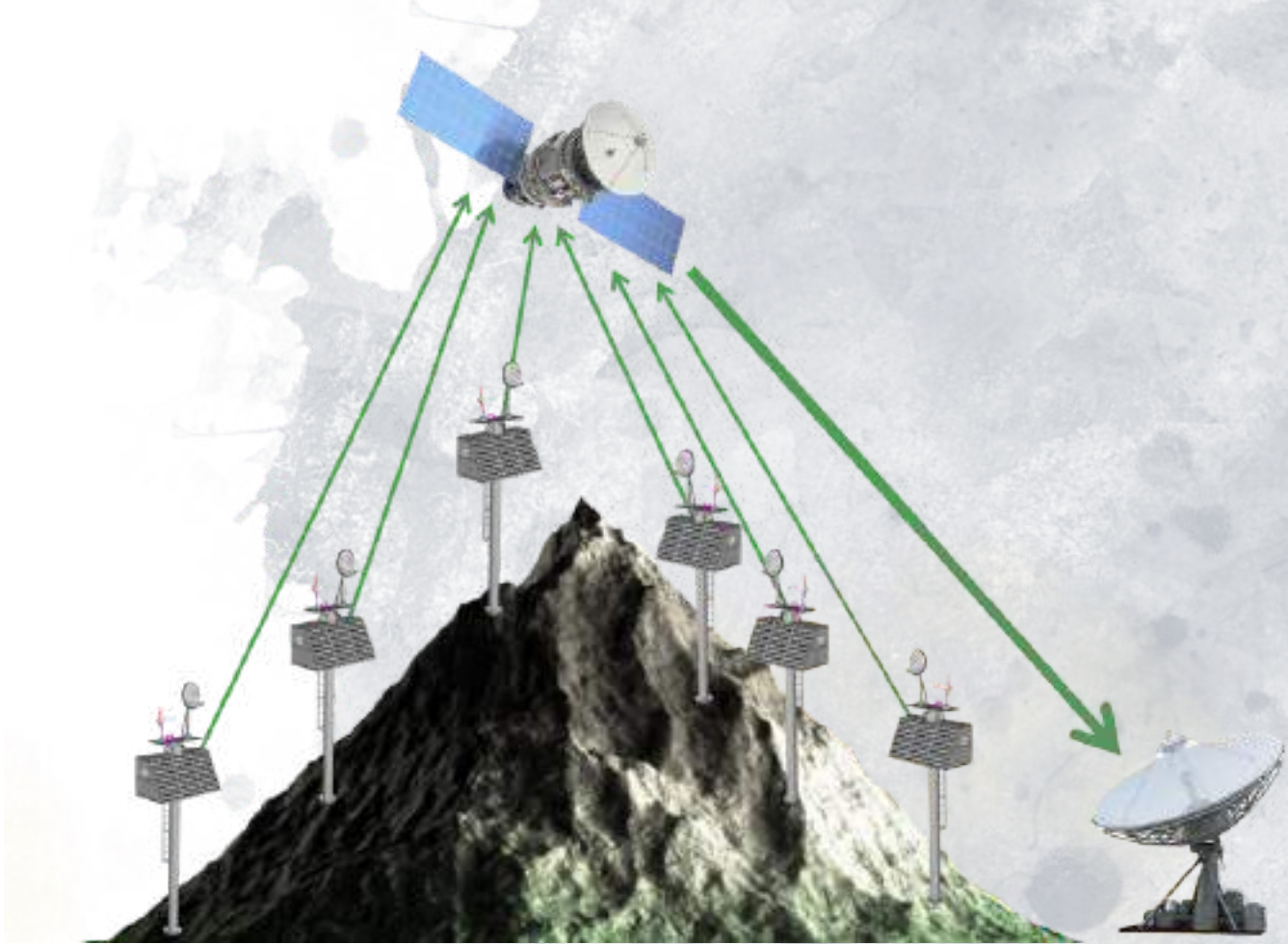
**Smart Communication:** Allows device intercommunication for enhanced coverage.

**AI-Driven Analysis:** Processes field-captured images with artificial intelligence.

**Instant Alerts:** Provides real-time video feeds to officers.

**Quick Intervention:** Enables swift on-site response to forest crimes.

# Solar and Wind System Powered Satellite Towers



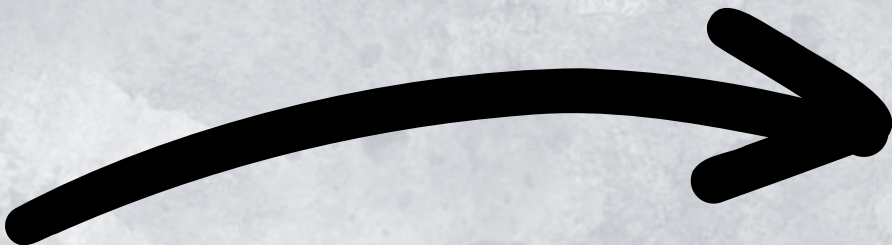
**Solving Infrastructure Issues:** Utilizes solar and satellite systems to address forest internet and energy challenges.

**Sustainable Energy:** Employs solar panels for clean, renewable energy.

**Instant Data Transfer:** Uses satellite systems for immediate data communication.



# Solar and Wind System Powered Satellite Towers



Central Forestry Management



Artificial Intelligence and Satellite-Assisted Real-Time Image Processing and Transfer



Local Forestry Management



# Command & Control Center



**Nationwide Operational Management:** Streamlining and centralizing processes across the entire country.

**AI-Integrated Mechanisms:** Harnessing artificial intelligence applications for inter-machine operations.

**Comprehensive Alert System:** Generating alarms for detected vehicles, humans, animals, and machinery.

**Effective Data Management:** Ensuring efficient database and record handling.

**Blacklist and Suspect Identification:** Accurately identifying blacklist entries and potential suspects.

**Centralized Monitoring:** Operating an autonomous, centralized monitoring and control system.

# Save Forests with Advanced Technology!

Centralized data processing, a key to cost savings.

Human, vehicle detection and illicit construction spotting, empowering the user.

Fire detection time, racing against the seconds.

Error margin? Virtually none, prioritizing speed and precision.

Operational delay and cost, a thing of the past.

The fastest intervention route for firefighters, instantly communicated.

Observation and detection infrastructure, maximum benefit at minimal cost.



**contento**

**Thank You**

**[www.contentoconsultancy.com](http://www.contentoconsultancy.com)**