



PEGASUS
INTELLIGENCE

PEGASUS INTELLIGENCE

Product Overview

with the Official Dealer

CONTENTO



CONTENTO is an official dealer of Pegasus Intelligence.

TABLE of CONTENTS

INTELLIGENCE SOFTWARE SYSTEMS	3
ADVANCED TARGETING	4
COMMUNICATION SECURITY (COMSEC).....	5
GEOLOCATION SYSTEM.....	6
OPEN SOURCE INTELLIGENT (OSINT)	7
INTELLIGENCE HARDWARE SYSTEMS.....	8
SPECTRUM ANALYZER	9
AUDIO RECORDERS.....	10
VIDEO SURVEILLANCE.....	11
GPS TRACKING	12
EAVESDROPPING / BUGGING DEVICE.....	13
DETECTION SYSTEM.....	13
BACKPACK IMSI CATCHER.....	14
VEHICULAR IMSI CATCHER.....	15
TACTICAL DRONE IMSI CATCHER	16
JAMMING DEAFENING SYSTEMS	17
AUDIO JAMMER.....	18
JAMMERS.....	19
MILITARY SYSTEMS	20
AUTONOMOUS UNMANNED	21
AMPHIBIOUS ASSAULT SUPPORT PLATFORM (A.A.S.P.).....	21
AUTONOMOUS UNMANNED	22
MISSION ADAPTABLE PLATFORM SYSTEM (M.A.P.S.)	22
AUTONOMOUS UNMANNED	23
RANGER.....	23
AUTONOMOUS UNMANNED	24
SAPPER.....	24
PHANTOM MESH.....	25



PEGASUS
INTELLIGENCE

CONTENTO is an official dealer of Pegasus Intelligence.

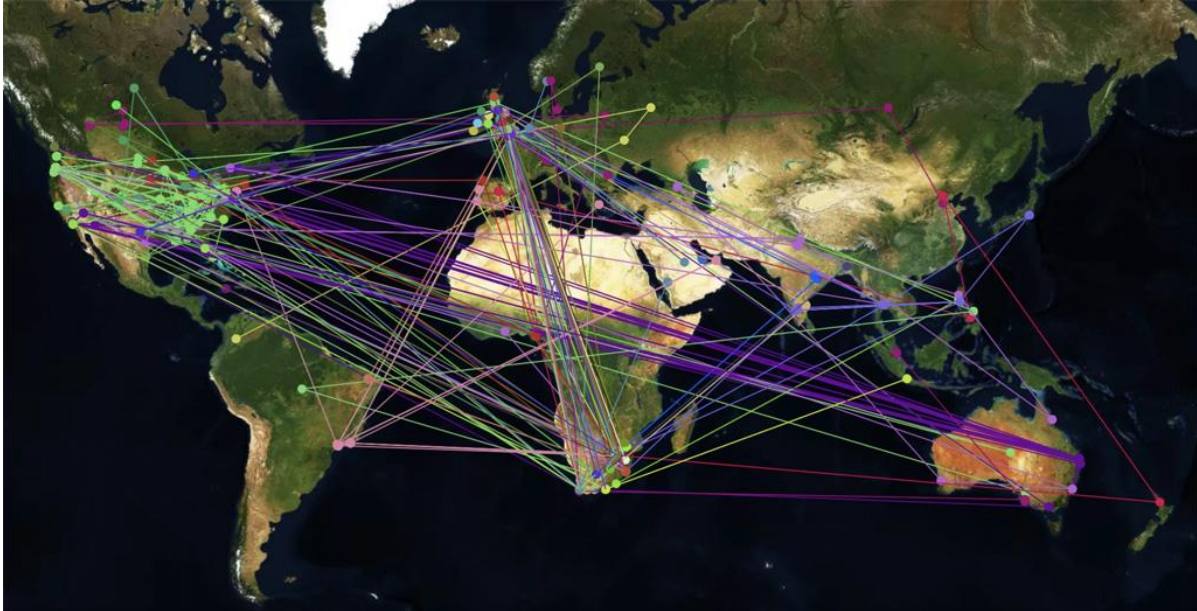
INTELLIGENCE SOFTWARE SYSTEMS

www.contentoconsultancy.com



CONTENTO is an official dealer of Pegasus Intelligence.

ADVANCED TARGETING



Pegasus Intelligence's technical suite provides specialized geolocation tools, which offer unique insight into the movement and behaviors of specified smart devices.

Built to meet the dynamic requirements of national mission units and national agencies, the capability is a powerful combination of first party data acquisition, processing and exploitation tools.

Among other features, the system derives understanding of the movements of individuals and organizations across traditionally denied terrain.

The system is operationally deployed against adversaries, building patterns of life, delivering source vetting requirements, placement and access validation and bed down locations against traditional hard targets.

Through the use of this capability and Pegasus Intelligence Tradecraft Individuals can be remotely targeted across the globe, based on their web application behavior. TTP discovery, Foreign Intelligence Service activity domestically and abroad, monitoring of terrorist activities, trans-national movements, safe houses and more.

CONTENTO is an official dealer of Pegasus Intelligence.

COMMUNICATION SECURITY (COMSEC)

COMSEC is a component of Information Assurance that deals with measures and controls taken to deny unauthorized persons information derived from telecommunications and to ensure the authenticity of such telecommunications. COMSEC includes cryptographic security, transmission security, emissions security, and physical security of COMSEC material.

HELIX OS



HELIX OS transforms an Android mobile phone into an unbreakable communications device using a custom encrypted operating system and using HELIX OS™ multi layered advanced encryption for communications.

HELIX uses encrypted packets of data for transmitting voice and messages across our statically located relay servers that are based in countries that have the strictest privacy laws in the world, preventing any outside parties any access. No voice or data is stored anywhere on your network making our service totally anonymous.

VAULT OS



VAULT OS™ transforms an android mobile in an un-hackable communication device, using GOLD LOCK™ 4G

PROTECT - VAULT OS™ provides an impenetrable Vault clear of Viruses, Spyware, Trojans & Ransomware

SECURE - VAULT OS™ achieves this by disabling unsecure phone features including Standard Calls, SMS, Browsing, Bluetooth, Uploads, Downloads, GPS and Camera.

ENCRYPT - VAULT OS™ utilizes GOLD LOCK™ 4G. Triple layer encryption using advanced algorithms, Key changes every few seconds - no backdoors, Visible hash codes - prevents mitm attacks, encrypts voice, chat and push to talk, secure conference, chat and push to talk, contacts stored on a secure server, not on phone and works on all data networks globally.



CONTENTO is an official dealer of Pegasus Intelligence.

GEOLOCATION SYSTEM

The Geolocation system is a real-time cellular positioning solution for handsets using 2G (GSM), 3G (UMTS) and 4G (LTE) networks. The solution plays a key role in enabling governmental authorities to retrieve the location of local cellular handsets in cases of emergency and for search and rescue missions.

The Geolocation system is based on an advanced core infrastructure and is presented on an intuitive user interface for quick and easy positioning of cellular Handsets.

MAIN BENEFITS:

- Locates the approximate area (Cell ID level) of cellular handsets using 2G, 3G & 4G networks - Generates passive or active queries to obtain cellular handset location information
- Leverages a GMLC core infrastructure - Offers a stable query inf restructure and mechanisms for handset location
- Generates real-time alerts relating to cellular handset movements or communication behavior - Presents indicative alerts for network events created by the selected cellular handsets
- Analyzes a cellular handset's routine and movements - Uses query reports to identify and analyze location patterns of cellular handsets



CONTENTO is an official dealer of Pegasus Intelligence.

OPEN SOURCE INTELLIGENT (OSINT)

ATHENA OSINT

If you are an organization or commercial business that needs to deeply understand your investigated entities, identify future entities of interest and highly personalize your next strategic and/or tactical interaction with them, you need our Athena OSINT multi-dimensional data enrichment engine.

Athena OSINT provides an end-to-end data enrichment solution that collects, analyses and can quickly format the results of an investigation in an easy-to-read report. It is discreet with complete and comprehensive network source anonymization and encryption which provides actionable insights with a low digital signature. Designed from the ground up to be an intuitive and cost-effective system that provides rapid results to the end user without relying on highly skilled analysts.

From data enrichment, across the surface and deep web to relationship analysis and much more, Athena OSINT has all your requirements covered.



FAKE PROFILE DETECTION AND ANALYSIS

In the new age of social media and advertising people are finding it more difficult to distinguish between fake or real accounts. Fake accounts and Deepfakes are spreading propaganda and fake news meaning that social media is now being used as a weapon to manipulate public opinion and change consumer behaviors.

Pegasus offers a solution to combat the threat of fake news and disinformation that causes irreversible losses to companies and the public sector in the form of lost revenue, reputation, and trust.

Our solution can raise the alarm at the earliest stage of execution and advises on counter measures to mitigate financial and reputational impact for brands, services, and public sector organizations following fake and negative content being allowed to spread online.

INVESTIGATING THE DARK NET AND DEEP WEB

Our solution offers access to the world's largest commercially available database of darknet and deep web content, enabling you to access, collect, and visualize darknet intelligence safely and securely.

With an ever-growing need for Governments and Law Enforcement Agencies to find criminals and criminal activity on the darknet our solution provides a quick and easy way to interrogate between 1 billion URLs and 10 to 15 million darknet domains daily. Businesses are also increasingly fighting a battle to protect their Intellectual property and stay abreast of new vulnerabilities being sold in underground marketplaces.



PEGASUS
INTELLIGENCE

CONTENTO is an official dealer of Pegasus Intelligence.

INTELLIGENCE HARDWARE SYSTEMS



CONTENTO is an official dealer of Pegasus Intelligence.

SPECTRUM ANALYZER

The YRI Spectrum Analyzer is designed to detect illicit eavesdropping signals, perform site surveys for communication systems, conduct radio frequency, analyze, and investigate misuse of the RF spectrum.

The YRI is a portable system with three types of TSCM solutions; the spectrum analyzer that sweeps 6 GHz in real time, a Wi-Fi network scanner and a wireless camera scanner.

The hardware of the system comprises of: i7 Lenovo touch screen computer, a Samsung tablet, wireless camera detector, USB connectors, fan, antennas etc. The system can be divided in to two independent portable units with internal batteries for 3 hours of operation.



CONTENTO is an official dealer of Pegasus Intelligence.

AUDIO RECORDERS

WIFI /GSM/RF DEVICES 



Car Key Holders



Belt Buckles



Electric Sockets



Cartoons



CONTENTO is an official dealer of Pegasus Intelligence.

VIDEO SURVEILLANCE

WIFI /GSM/RF DEVICES 



Electric Sockets



Car Phone Holders



Polymer Rocks



Electrical Box



Laptop Electric Adapter



Smoke Detector

CONTENTO is an official dealer of Pegasus Intelligence.

GPS TRACKING

WIFI /GSM/RF DEVICES 



Under-Car Tracking System



Belt Buckle

CONTENTO is an official dealer of Pegasus Intelligence.

EAVESDROPPING / BUGGING DEVICE DETECTION SYSTEM



SMART-D is a stationed intelligent Eavesdropping/Bugging device detection system. Scans and detects suspicious and potential bugging (audio and video) device frequencies 24/7 and every second.



- Unmanned, no need for an operator.
- Detects digital signal (Ultra-Wide Band, Bluetooth etc).
- Keeps records of all detected alerts.
- Covers frequency ranges from 25 kHz to 6 GHz.

CONTENTO is an official dealer of Pegasus Intelligence.

BACKPACK IMSI CATCHER

Covert tactical missions, body-worn in commercial off-the-shelf backpack

Supporting 2G, 3G, 4G (FDD & TDD*) & 5G NSA technologies

Fast network scanning with advance broadcast information decoding

Up to 4x independent transmissions

Fully native functionality supported

Supports connectivity to external high-power PA

Battery operation time: up to 1.5h with two batteries, supports hot-swap capability

Lower noise figure by regulating dynamically the fans speed Vs temperature

Simplified panel connections - using multi-pin aviation grade connectors

Built-in low-level safety features (battery smart management, temperature, current protections, gracefully shutdown of embedded PC)

[Optionally] Managed remotely over Tactical IP Mesh or 3G/4G backhauling datalink

Proprietary mounting for VDX-8 rack-based system (Vehicular system with external RF power amplifier)

Proprietary mounting for covert motorcycle case



CONTENTO is an official dealer of Pegasus Intelligence.

VEHICULAR IMSI CATCHER

Tactical Vehicle or Manned Airborne deployment

Supporting 8x independent transmission in base configuration

The number of radios and RF can be scaled and customized as per customer requirement

Option for using dedicated BTS drawer or hosting two MDX-4 systems

Supporting 2G, 3G, 4G (FDD & TDD*) & 5G NSA technologies

Fast network scanning with advance broadcast information decoding

Fully native functionality supported (*requires backhaul connection to key server provider)

Up to 30W average power output on 2G, 3G, 25W on 4G FDD/TDD

3 x Tx and 1 x Rx Omni Antennas

Military grade shock absorbing rack case (can also be used in Airborne)

Battery operated Power supply unit with automatic battery safety and battery monitoring

Bluetooth enabled level monitoring

Connection to upgraded car alternator for continuous operation and external batteries charging

[Optionally] Managed remotely from Command & Control over Tactical IP

Mesh or 3G/4G back- hauling datalink



CONTENTO is an official dealer of Pegasus Intelligence.

TACTICAL DRONE IMSI CATCHER

Medium range operational capabilities payload mounted on COTS DJI Matrice M600 Drone

Highly transportable, compact footprint, fast system deployment (quick payload mount, allow DJI M600 to fold the arms and legs when packed, etc)

Available as complete integrated drone cellular system, or stand alone cellular payload for instal on end users DJI M600 drone

Provide covert intelligence gathering functionality over the AOI (rural, semi-rural, semi-urban and urban environments)

Intercept & record GSM/2G voice and sms transmissions (optional with decipher)

Operational time: hovering up to 20min

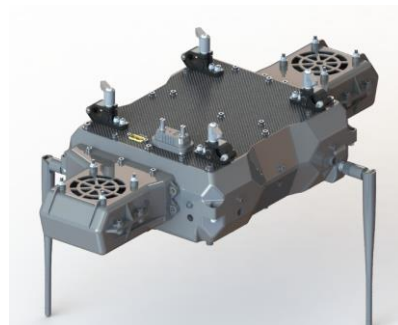
Range of control: up to 5Km LoS

Operational altitude: 150-350m (AGL)

High power RF front-end delivering up to 33dBm (2W) average power per transmission



Commercial Drone



Cellular Payload



Ground Control Station



PEGASUS
INTELLIGENCE

CONTENTO is an official dealer of Pegasus Intelligence.

JAMMING DEAFENING SYSTEMS



CONTENTO is an official dealer of Pegasus Intelligence.

AUDIO JAMMER

A professional device that disrupts microphones in its vicinity. Using this device, which uses ultrasonic waves, ordinary microphones, such as cell phones and recording devices, laser microphones and directional microphones can be disturbed.



CONTENTO is an official dealer of Pegasus Intelligence.

JAMMERS



WS-101M-A1.0 **400 WATT**
 High Power Outdoor Manually controlled Prison Jamming Solution
6 CHANNELS
 GSM900 GSM1800/DCS 3G 4G GPS WIFI/Bluetooth
 925-960MHz
 1805-1880MHz
 2110-2170MHz
 2620-2690MHz
 1570-1580MHz
 2400-2500MHz



WS-101M.NET **300 WATT**
 High Power Outdoor Digital Synthesized Prison Jamming Solution
5 CHANNELS
 CDMA800 GSM900 GSM1800 WIFI2.4G 3G/CDMA200
 850-894MHz
 925-960MHz
 1805-1880MHz
 2400-2500MHz
 2110-2170MHz



WS-101K5 **70 WATT**
 High Power Indoor Cell Phone Jammer W/Adjustable Power Output For Each Band
5 CHANNELS
 CDMA800 GSM900 GSM1800 4G LTE2600 3G/CDMA200
 850-894MHz
 925-960MHz
 1805-1880MHz
 2620-2690MHz
 2110-2170MHz



WS-101K6 **90 WATT**
 High Power Indoor Cell Phone Jammer W/Adjustable Power Output For Each Band
6 CHANNELS
 CDMA800 GSM900 GSM1800 4G LTE2600 3G/CDMA200 WIFI2.4
 850-894MHz
 925-960MHz
 1805-1880MHz
 2620-2690MHz
 2110-2170MHz
 2400-2500MHz



WS-5CA **12 WATT**
 Indoor Cell Phone Jammer W/Adjustable Power Output For Each Band
5 CHANNELS
 CDMA800 GSM1900 3G 4G GPS WIFI2.4
 925-960MHz
 1805-1880MHz
 2110-2170MHz
 791-860MHz
 2400-2500MHz



WS-101A6 **15 WATT**
 Indoor Cell Phone Jammer W/Adjustable Power Output For Each Band
5 CHANNELS
 4G LTE800 GSM900 GSM1800 3G WCDMA WIFI 2.4Ghz 4G LTE2600
 780-830MHz
 925-960MHz
 1805-1880MHz
 2110-2170MHz
 2400-2485MHz
 2620-2690MHz



WS-K6 **5 WATT**
 Hand Held Cell Phone Jammer W/On-Off Power Switch for Each Band
6 CHANNELS
 GSM900 GSM1800 3G WIFI, 2.4Ghz LTE4G,2600 GPS
 925-960 MHz
 1805-1880MHz
 2110-2170MHz
 2400-2500MHz
 2620-2690MHz
 1570-1580MHz



WS-MANPAK JAM4 **110 WATT**
 Multi Band High Power ManPack Jammer
4 CHANNELS
 HF, Radio Control Toys; Car Alarms
 Walky-talky (VHF) Remote Control, Walky-talky (UHF300)
 Cellular NMT; Walky-Talky (UHF400); Cellular CDMA450; Car Alarm; R
 LTE4G, Cellular CDMA800/GSM900, UHF800 Remote Control
 25-60MHz
 135-175;
 240-280;
 310-400MHz
 400-470MHz
 725-775,
 850-895;
 925-960MHz



WS-VIP JAM5 **250 WATT**
 High Power Portable, DDS, MULTI-BAND Jamming System W/Wired Remote Control
5 CHANNELS
 LTE72600 (4G) Cellular (GSM/CDMA) CDMA800,GSM900
 Cellular (GSM/CDMA) GSM1800,GSM1900
 WCDMA 2100 (3G)
 WLAN & Bluetooth & WIFI2.4G, LTE,4G
 2620-2690MHz
 850-895;
 925-960MHz
 1805-1880;
 1920-1990MHz
 2110-2170MHz
 2400-2500MHz



WS-101M-A1.0 **260-550 WATT**
 High Power Portable, DDS, MULTI-BAND Jamming System W/Wired Remote Control
6 CHANNELS
 HF, Radio Control Toys; Car Alarms; Walky-talky (VHF)
 Remote Control, Walky-talky (UHF300)
 Cellular NMT; Walky-Talky (UHF400); Cellular CDMA450; Car Alarm;
 Remote Control Bluetooth, WLAN; Cellular 4G;
 LTE4G ; Cellular CDMA800/GSM900, UHF799
 20-100MHz
 135-175/
 240-280MHz
 310-400MHz
 400-470MHz
 725-775MHz
 850-895,
 925-960MHz



WS-VIP JAM7 **320 WATT**
 High Power Portable, DDS, MULTI-BAND Jamming System W/Wired Remote Control
7 CHANNELS
 HF, Radio Control Toys; Car Alarms
 Walky-talky(VHF), UHF300/400/500
 Cellular CDMA, GSM; DCS, Cellular 4G ; Cellular 3G ;
 IFI, Bluetooth, WLAN; Cellular 4G
 20-100MHz
 100-500MHz
 800-1000MHz
 1800-2000MHz
 2000-2200MHz
 2400-2500MHz
 2500-2700MHz



WS-VIP JAM8 **360-550 WATT**
 High Power Portable DDS MULTI-BAND Jamming System W/Wired Remote Control
 and External Battery Pack
8 CHANNELS
 HF, Radio Control Toys; Car Alarms
 Walky-talky (VHF), UHF300
 Walky-talky (UHF), UHF300/400/500
 Cellular CDMA, GSM
 DCS, Cellular 4G; Cellular 3G; IFI, Bluetooth, WLAN; Cellular 4G
 20-100MHz
 100-300MHz
 300-500MHz
 800-1000MHz
 1800-2000MHz
 2000-2200MHz
 2400-2500MHz
 2500-2700MHz



CONTENTO is an official dealer of Pegasus Intelligence.

MILITARY SYSTEMS

CONTENTO is an official dealer of Pegasus Intelligence.

AUTONOMOUS UNMANNED AMPHIBIOUS ASSAULT SUPPORT PLATFORM (A.A.S.P.)

The A.A.S.P. employs advanced technology, selective automation and intuitive interfaces to put highly capable systems at the fingertips of soldiers and marines.

A.A.S.P. increases the safety and effectiveness of all war fighters and at the same time reduce risks to the communities in which they operate.

A.A.S.P is a medium sized semi-autonomous amphibious unmanned platform with autonomous navigation system and command interface capable of supporting a variety of combat and logistics missions.

A.A.S.P has the ability to conduct amphibious operations from ship to shore, operating out of the wet well of an LHD to shore and continue on to recon littoral zones and beyond, carrying a 700kg payload on sea and 1600kg on land.

MULTIPLE ROLES

- Beach reconnaissance
- Force multiplier
- Hunter killer
- Loyal Wingman
- Last mile logistics
- A.A.S.P is rugged, simple to operate, rapid to deploy and is capable of being equipped with an array of advanced sensors tailored to operational requirements.

SYSTEM FEATURES

- Battery with built in diesel generator
- Jet propulsion system for amphibious operations
- Autonomous and remote control
- Soldier operated via chest rig and android device
- Obstacle detection and avoidance
- Waypoint navigation
- Thermal drive camera
- Instant data erase or B.I.P.
- Multiple payload options
- Health and usage monitoring
- "L" band encrypted suite B and AES 256 Radio equipment (Standard)
- Swarming capability, multiple A.A.S.P. can swarm on a target
- Amphibious operation with its inbuilt jet propulsion system travels at a speed of 3-5 km/h in open water





CONTENTO is an official dealer of Pegasus Intelligence.

AUTONOMOUS UNMANNED MISSION ADAPTABLE PLATFORM SYSTEM (M.A.P.S.)

The M.A.P.S. employs advanced technology, selective automation and intuitive interfaces to put highly capable systems at the fingertips of soldiers.

M.A.P.S. increases the safety and effectiveness of all war fighters and at the same time reduce risks to the communities in which they operate.

M.A.P.S. is a medium sized semi-autonomous unmanned platform with autonomous navigation system and command interface capable of supporting a variety of combat and logistics missions.

M.A.P.S. is rugged, simple to operate, rapid to deploy and is capable of being equipped with an array of advanced sensors tailored to operational requirements.

MULTIPLE ROLES

- Last mile logistics
- Force multiplier
- Hunter killer
- Loyal Wingman
- Kerbside resupply

SYSTEM FEATURES

- Battery with built in diesel generator
- Autonomous and remote control
- Soldier operated via chest rig and android device
- Obstacle detection and avoidance
- Waypoint navigation
- Instant Data erase or B.I.P.
- Multiple payload options
- Health and Usage Monitoring
- "L" band encrypted suite B and AES 256 Radio equipment (Standard)
- Swarming capability, multiple M.A.P.S can swarm on a target





CONTENTO is an official dealer of Pegasus Intelligence.

AUTONOMOUS UNMANNED RANGER

A unique product employing the latest operational payload technology coupled with innovative robotics.

Providing defile clearing, reconnaissance, force multiplication, and intelligence gathering across today's dynamic battlefields.

The RANGER is a small Unmanned Ground Platform specifically designed to support bespoke applications driven by client requirements and use case.

A suite of control methods including by tethered hand control, telemetry, or autonomous operation with control from a command-and-control facility.

RANGER is rugged, simple to operate, rapid to deploy and is capable of being equipped with an array of advanced sensors tailored to operational requirements.

The RANGER UGV is designed to enable internal carriage in armored cavalry vehicles.

A single cavalry vehicle can internally carry and recharge the RANGER, providing 24/7 local coverage if required.

Operating thousands of meters from its parent vehicle for hours at a time, RANGER will allow your cavalry to see the enemy first while staying out of reach and providing early detection of threats.

RANGER supports dis-mounts in a number of ways, fitted with a remote weapon station it can be used as a force multiplier combined with its swarming capability multiple RANGER's can be deployed in a hunter killer role.

SYSTEM FEATURES

- Battery operated
- Autonomous and remote control
- Waypoint navigation
- Instant Data erase or B.I.P.
- Multiple payload options
- Health and Usage Monitoring
- "L" band encrypted suite B and AES 256 Radio equipment (Standard)
- Swarming capability, multiple RANGER's can swarm on a target





CONTENTO is an official dealer of Pegasus Intelligence.

AUTONOMOUS UNMANNED SAPPER

The SAPPER is an autonomous mine consumable delivery system.

Sapper has the ability to identify and select high value target based on pre-configured parameters.

Delivering at a minimum an M-kill, without betraying the operator's position.

Utilizing the pre-programmed swarm feature, multiple SAPPER systems can attack a target producing a C-kill.



CONTENTO is an official dealer of Pegasus Intelligence.

PHANTOM MESH

Phantom MESH delivers real time situational awareness with clear digital communications, utilizing MESH radio technology through our network hub via the local LTE, satellite or fixed line internet infrastructure. With our MESH products at the core, we can assist customers in integrating their choice of end user devices and equipment, allowing full customization of the solution. We deliver integrated solutions for Defense, Law Enforcement, Maritime Surveillance & Protection, Emergency Services, Search & Rescue and Commercial users.

PERSONAL TACTICAL COMMUNICATION



- Headset
- GPS
- Helmet Camera
- Rugged Data Tablet
- Bio Health Sensors

RUGGEDISED MESH REPEATER



PPT RADIO



BODY WORN RADIO



USES OF pMESH

- VIP Convoy Communications
- Identifying and monitoring of terrorist threats
- Monitoring of serious crime
- Public order policing
- Intelligence gathering
- Maritime
- Airborne down-links
- Battlefield Situational Awareness
- Robotic and Autonomous Systems (RAS)
- Including UAVs, UGVs and USVs
- Connected and Autonomous Vehicles (CAV)



iMESH

The iMESH is a ruggedised Gigabit class LLTE networking platform designed to deliver high speed broadband connectivity across a wide range of in-vehicle and operations room environments.

- Two LTE Intelligent radios built in
- World GSM compatible
- Up to 128 wireless clients



iMESH KRIP

Expanding on the iMESH the iMESH KRIP comes complete with a gateway allowing for a seamless transition of traffic from the simplex team radios across to team members operating on the Motorola Wave PTX application.

- ROIP connection between RF and IP
- IP67 rated
- Full or split tunnel VPN
- Including UAVs, UGVs and USVs
- Connected and Autonomous Vehicles (CAV)



FLEXIBLE & SECURE OPERATIONS

- Single unit for all your technologies - Cellular 3G/4G/5G, Wi-Fi and 2 Way RoIP
- Flexible configurations for fixed and on the move Vehicle, Naval, and Man-Carried operations with coverage ranges reaching up to 10 Km
- Independent and MESH unit communications
- Full traffic monitoring & control for cost efficient back haul management and ultra-high security
- Secure and managed Inter-Network communications with commercial networks for global connectivity
- Ad-Hoc subscriber support



ADVANCED NETWORK ANALYSIS

With operations rarely playing by the book - flexibility is critical to your mission's success. Embedding advanced network analysis and optimisation capabilities iHIVE will automatically optimise itself to provide your best possible services of any RF and Jamming challenge.

Understanding security, iHIVE is the only network of its kind, embedding a threat Intelligence engine on network traffic and an Off the Air security module for real-time alerts on potential Wi-Fi and cellular threats in the area.

VISIBILITY



INSIGHT



CONTROL

